

## Engineered Systems



BISAN Dry chemical handling Systems:

- Dry and wet polymer prep. & feed systems
- Dry chemical handling and delivery systems
- KMNO4 preparation and dosing systems
- Chemical Weighing processing systems



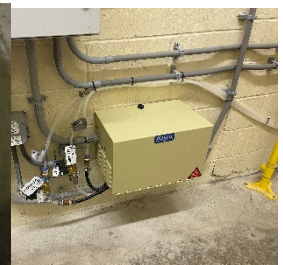
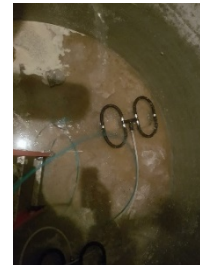
BISAN Chemical Feed systems:

- Standard chemical feed systems
- Sure, n Safe® chemical feed systems
- Chlorine Dioxide preparation and feed systems
- Sure, n Safe® remote location chlorinators
- pH control systems
- tote and drum all in one chemical feed



BISAN Mixing systems:

- Mechanical Mixers and mixing systems
- Induced flow mixing system (ejectors)
- Diffused air mixing systems
- Inline high and low shear static mixing



BISAN Engineered systems:

- Fuel delivery and handling systems
- Water & Wastewater treatment and support systems
- Rain Harvesting and water reclamation systems
- Control Systems
- Drum Washing & Crushing Systems (in cooperation with



**Drumbeaters  
of America Inc.**



## Chemical Pumps & Accessories



Diaphragm & Solenoid Metering Pumps



Precision-Gear Metering Pumps



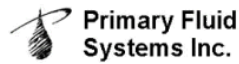
**Bredel**

Hose Pumps

Peristaltic & Hose Pumps



Spill Containment & Accessories



Corp Stops & Quills  
PRV, calibration columns, pulsation dampeners etc.



Scales for Gas & drum/IBC totes



Emergency Showers and Eyewash units

## Valves & Penstocks



Ball valves Industrial API 6D / UL & FM  
Cryogenic and Low Temp Valves  
WOG Ball valves  
Plastic Valves



Pilot & direct operated control valves  
Pilot operating Needle valves  
Water and Wastewater Air Valves



Penstocks / Flap Valves / Stop Logs



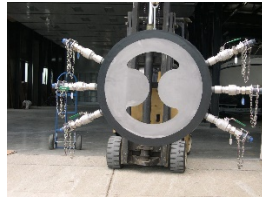
Constant flow control Valves



Couplings, tapping saddles

## Mixers & Mixing Systems

**WESTFALL**



Static Mixers

**emec** SIMPLE AS WATER **PRO-DO-MIX**



Manual & Electric Mixers

## Instruments & Controls

**WESTFALL**



Orifice & Venture Meters  
Flow straightener & Conditioner

**PNEUMERCATOR**  
Liquid Level Control Systems

Tank Management Systems

**emec** SIMPLE AS WATER

Water Quality & Field Instrument

**KITAGAWA AMERICA**   
Visible Detection Of Invisible Gases™

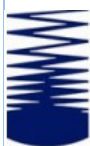
Gas Monitors & Detection

**ISOIL**   
I M P I A N T I

**adept**  
In line with the future. Precisely

Flow Energy / Electromagnetic / Ultrasonic / PD meters /  
Data loggers / Domestic mechanical and smart meters / IoT Gateway

## Recycling & Waste Management



**Drumbeaters  
of America Inc.**



Drum Washing & Crushing Systems